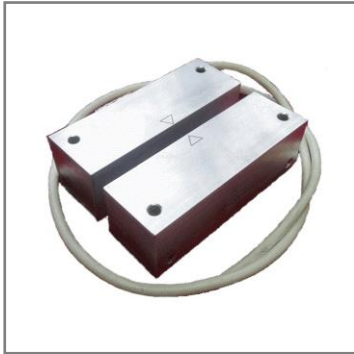




REED MAGNETIC POSITION SENSOR KM-250-12A “ARTOL”



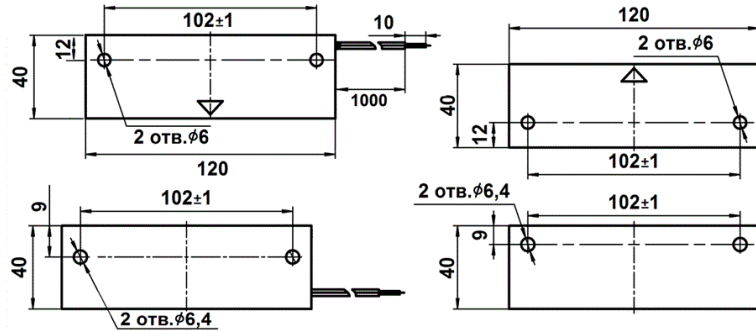
Description

Sensor KM-250-12A “ARTOL” is intended for blocking of steel gates, doors, sheds, other constructive elements of buildings and structures for the opening or displacement with generation of a signal by switching of AC circuits; switching AC circuits in automation systems.

ATTENTION: Sensor KM-250-12A “ARTOL” is designed to work only in AC circuits of 50/60 Hz!

Dimensions

Dimensions in mm



Enclosure of the position sensor KM-250-12A “ARTOL” is made of aluminium. Length of the output contact –1000mm without cutting.

Electrical characteristics

Switching current	≤12A
Switching voltage	≤250V AC 50/60 Hz
Switching power max	2,6kW,VA (active, inductive load)
Dimensions	Sensor - 120*40*20mm Magnet - 120*40*20mm
Weight	Sensor - 0,35kg Magnet - 0,41kg
Operating temperature	-50...+85°C
Humidity	100%

Sensor / Magnet	KM-250-NO “ARTOL” normally open contact	KM-250-NC “ARTOL” normally close contact	KM-250-NO-NC “ARTOL” changeover contact
	Contacts of the sensor on non-magnetic surfaces: close ≤40mm open ≥65mm	Contacts of the sensor on non-magnetic surfaces: open ≤40mm close ≥65mm	Contacts of the sensor on non-magnetic surfaces: switch ≤40mm switch back ≥65mm
	Contacts of the sensor on magnetic surfaces: close ≤40mm open ≥65mm	Contacts of the sensor on magnetic surfaces: open ≤40mm close ≥65mm	Contacts of the sensor on magnetic surfaces: switch ≤40mm switch back ≥65mm

